



# Universal Single Stage Switch Panel Wiring Diagram

PART NUMBER: 00-11048

## INSTALLATION INSTRUCTIONS

This Nitrous Outlet Universal Single Stage Switch Panel is designed to be used in any vehicle, and mounted nearly anywhere using the included hardware screws. If you need any assistance during installation or if you have questions about this plate system, call our Tech Help Line at (254) 848-4300.

### Tools Needed for Installation\*:

- Drill
- #48 Size Drill Bit
- Trim Tool
- Phillips Head Screwdriver

\*These are the tools required for installation of this kit on a stock vehicle. If your vehicle has aftermarket parts, other tools may be required.

### Step 1:

- Find desired location for switch panel installation.

### Step 2:

- Using the tools that suit the materials you are installing the panel to cut an area that allows the switches to protrude through.

### Step 3:

- Using a sharpie mark the 4 screw holes in the corners.

### Step 4:

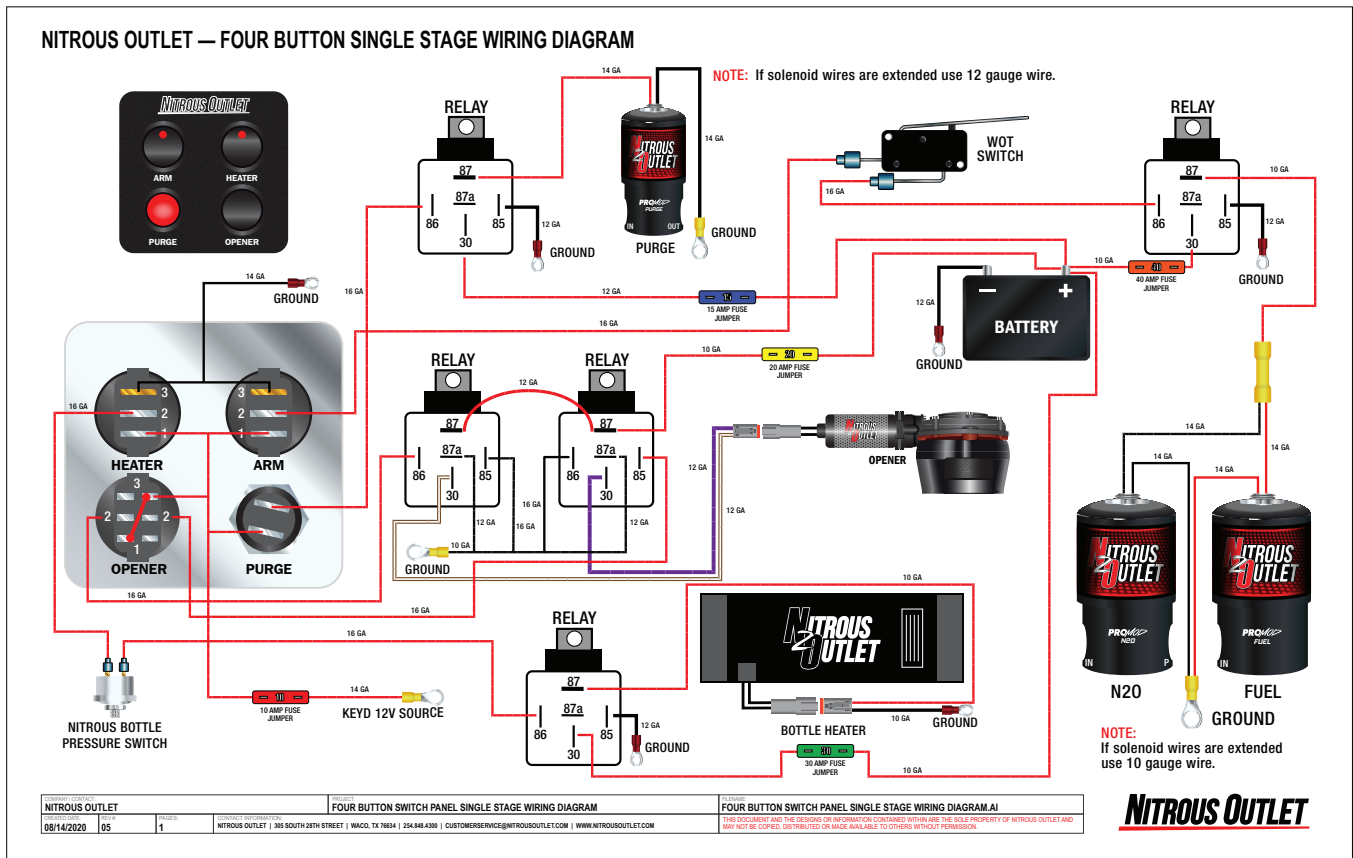
- Using a #48 size drill bit drill each hole.

### Step 5:

- Wire the switch panel using the supplied diagram below.

### Step 6:

- Screw the switch panel in place using the supplied screws.



IMPORTANT- ALL APPROPRIATE SAFETY EQUIPMENT (GLOVES, TOOLS ETC.) MUST BE USED DURING THE INSTALLATION OF THIS PRODUCT(S). NITRO DAVE'S LLC ACCEPTS NO RESPONSIBILITY FOR INJURIES RESULTING IN THE INSTALLATION OF ANY PRODUCT(S). NITROUS OXIDE IS FOR OFF-ROAD USE ONLY.

[WWW.NITROUSOUTLET.COM/INSTALLATION-GUIDES](http://WWW.NITROUSOUTLET.COM/INSTALLATION-GUIDES)